

Visual OPR

Visual OPR is a software module of 'Customs Manager' for processing and controlling Outward Processing Relief.

Visual OPR utilises the same database as the rest of 'Customs Manager', and all Tariff data input is validated against the full Customs Tariff contained in Visual Classifier, which is updated monthly.

Visual OPR will link seamlessly with the other modules that make up 'Customs Manager', especially Visual CFSP and Visual Warehousing.



Visual OPR handles all process charges for Re-Imports.

Visual OPR automatically calculates Duty Payable using the 'Differential Duty' method and the new 'Added Value' method if still under OPR, or logs return of goods that were originally exported under OPR.

Visual OPR produces the C&E 1154 Duty Calculation Schedule.

Visual OPR handles Extensions and also produces the letters to HM Customs for Extension Requests.

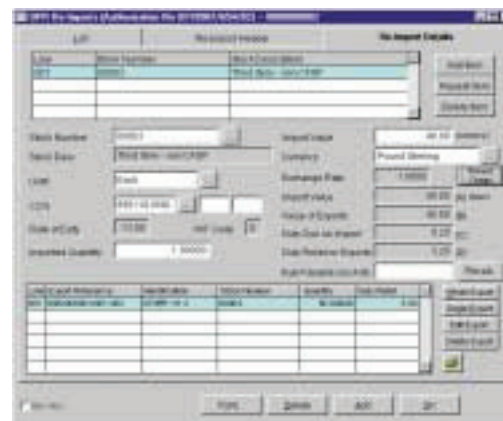
Visual OPR incorporates comprehensive, item-level tracking including audit trail, warning



Visual OPR caters for both 'one to one' and 'one to many' transactions using a Bill of Materials facility.

Visual OPR uses the 'Quantitative Scale' method for calculating Duty Payable.

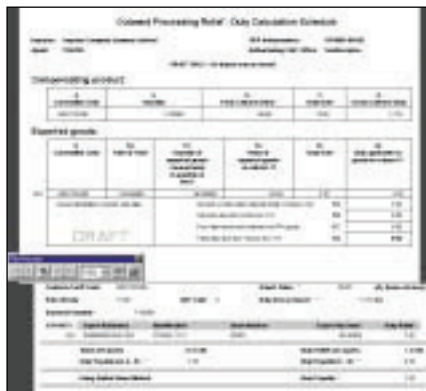
Visual OPR caters for multiple authorisations, each of which details information about the nature of the authorisation, and its expiry date. This also enables the software to alert the user if an authorisation is about to expire.



when nearing the end of the throughput period and transparency at all times of what has been exported under OPR and not yet re-imported.

Visual OPR supports Exports under GIR2A and the Standard Exchange System with and without prior importation.

In addition to planned enhancements, Impatex are more than willing to consider adding extra features, at the customer's request, so as to improve the product further.



Main Benefits

- **Multi-Authorisations**
- **Bill of Materials facility with rates of yield**
- **Supports Standard Exchange System with and without prior importation**
- **Calculation of Duty Payable for OPR, using both Differential Duty and Added Value methods**
- **Logs return of goods originally exported under OPR**
- **C&E 1154 Duty Calculation Schedule**
- **Supports Exports under GIR2A**
- **Complete Item-Level Tracking for Audit**
- **Warnings of impending OPR Authorisation Expiry and when nearing end of Throughput Period**
- **Compliant with July 2001 changes**

Rental (per location):

- 1 User:** £1000 p.a.
- 5 Users:** £2000 p.a.
- Additional 5 Users:** £1000 p.a.

Sharers: 50% of Rental & Licence

One-off Licence charge: (unless switching from alternative package or using Impatex DTI software)

- 1 User1:** £5000
- 5 Users:** £10000
- Additional 5 Users:** £2500

System Requirements

LAN Workstation (min):

- Dual core Processor**
- 2GB RAM and 64 MB video card**
- 5 GB of free hard disk space**
- 100/Gigabit Network Card**
- Windows 2K, XP, Vista or Windows 7**

LAN Server (min):

- Quad core / Dual Core Xeon**
- 4 GB RAM**
- 50 GB of free hard disk space (pref. SCSI or SATA) with RAID 1/5/10**
- Data backup device**
- Gigabit network card**
- Windows 2003 SP3**

Terminal Server (min):

- Quad core Xeon**
- 4 GB RAM + 128MB RAM per user**
- 80 GB free of SCSI/SATA RAID hard disk,**
- Gigabit network card**
- Windows 2003 SP3 or above**
- with or without Citrix**

Software:

Visual Classifier for Tariff validation and data updates

