

Visual Intrastat

Impatex developed its first Intrastat software, 'Envoy', in 1993, as a standalone, DOS software package. This has served our Forwarder and Trader customers well for over 7 years.

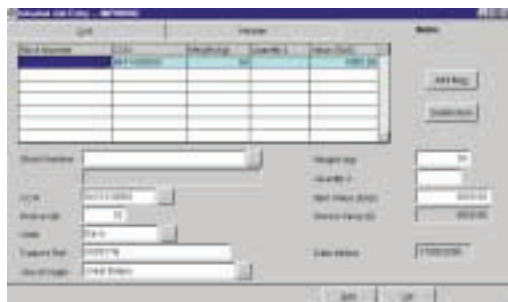
With the introduction of our 32 bit Windows 'Customs Manager' software, Impatex has developed **Visual Intrastat** that utilises Visual Classifier for data validation of the Customs Tariff and related data tables.



Prior to transmission, **Visual Intrastat** provides a 'Pre-Submission' Report to allow companies to check the data.

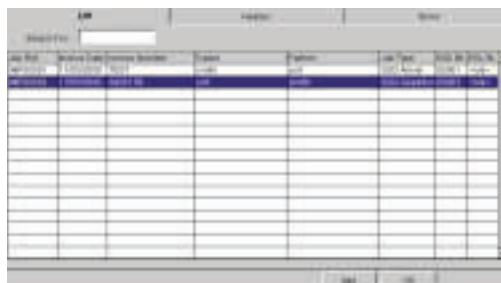
Visual Intrastat then reports its monthly returns to Customs by way of E-mail attachments via the Internet. This is not only very cost-effective, but also cuts out problems that sometimes occurs with sending the data by disk.

Because all the Intrastat data is keyed in off-line, and sent in batches, the time associated with transmission to HM Customs is minimal, and at the cost of a local telephone call.



Visual Intrastat caters for Arrivals and Departures, as well as EC Sales Lists.

Traders (Importers and Exporters) and Partners (Consignors and Consignees) are contained in the same database as the rest of 'Customs Manager', thereby saving double-keying of names and address details if using other modules.



Visual Intrastat utilises the full Customs Tariff for validation purposes, and therefore requires Visual Classifier.

Visual Intrastat provides a number of reports, sorted by country, company, date and type of return.



Repetitive Commodity Codes are stored in a trader-specific Product File, contained in Visual Classifier.



Main Benefits

- Integrates with Visual Classifier
- Full Customs Tariff, updated monthly
- Repetitive Commodity Codes stored by Trader
- Pre-Submission Reports
- Transmission to HM Customs via Internet
- Transmission Log
- Batch Transmissions
- Full Audit Capability
- 32 bit Windows Software

Rental (per system):

- 1 User: £500 p.a.
- 5 Users: £1000 p.a.
- Additional 5 Users: £500 p.a.

One-off Licence charge (unless switching from alternative package or using Impatex's DTI software):

- 1 User: £2500
- 5 Users: £5000
- Additional 5 Users: £2500

System Requirements

- LAN Workstation (min):
 - Dual core Processor
 - 2GB RAM and 64 MB video card
 - 5 GB of free hard disk space
 - 100/Gigabit Network Card
 - Windows 2K, XP, Vista or Windows 7

LAN Server (min):

- Quad core / Dual Core Xeon
- 4 GB RAM
- 50 GB of free hard disk space (pref. SCSI or SATA) with RAID 1/5/10
- Data backup device
- Gigabit network card
- Windows 2003 SP3

Terminal Server (min):

- Quad core Xeon
- 4 GB RAM + 128MB RAM per user
- 80 GB free of SCSI/SATA RAID hard disk,
- Gigabit network card
- Windows 2003 SP3 or above with or without Citrix

Software:

- Visual Classifier for Tariff validation and data updates

