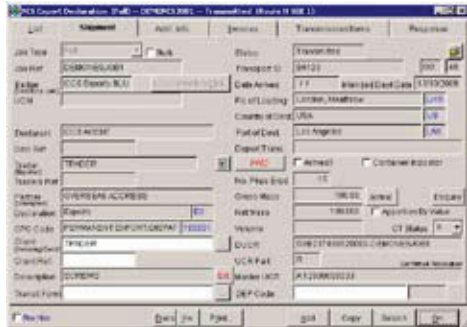


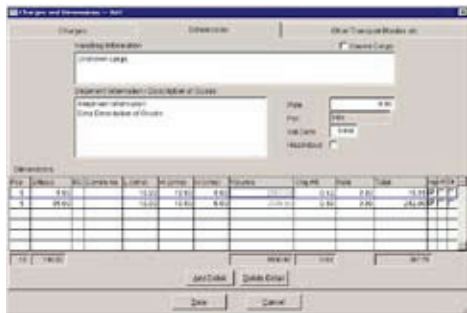
Visual Exports

Visual Exports is a software module of 'Customs Manager' that not only caters for the New Export System (NES) and the New Computerised Transit System (NCTS), but also acts as a full-featured, multi-modal export forwarding package.



Visual Exports can be used either by a Trader wishing to use a more comprehensive NES and/or NCTS package than the HMRC Web facility, or by a Forwarder wanting to process NES and NCTS declarations on behalf of their Trader clients, whilst looking to computerise their export forwarding functions or replace another forwarding package.

Visual Exports can be used as a 'stand-alone' module, along with Visual Classifier for Tariff validation. Alternatively, it can be used as a communications 'gateway' to the port and airport Community Service Providers (CSP) or EDCS.



Visual Export's NES facility caters for the Full Export Declaration (FDE) in addition to Simplified Procedures whereby a Pre-Shipment Advice (PSA) is processed initially with minimal details followed by a Supplementary Declaration for Exports (SDE) later with full details. The software also caters for C21s, Low Value/Non Stat and 'Bulk' entries.

Visual Exports stores default information by Exporter and Consignee, and uniquely stores repetitive Customs Commodity Numbers (CCN)s against Exporters,

Consignees and the Relationship between both. In addition, it can store CCNs by trader-specific product codes.

Visual Exports incorporates an Aggregation facility, with Worksheet Print for complex NES entries. A user-friendly Entry Advice can be printed, along with plain-paper SAD and Transit Accompanying Document (TAD).

Visual Exports provides a full range of plain-paper export forwarding documents at 'Master' and 'House' level, in addition to Invoicing, Job Costing and links to Sage and other accounts packages.



Main Benefits

- **Full Declaration (FDE)**
- **Simplified Procedures (PSA & SDE)**
- **Bulk Entries**
- **C21s & Low Value/Non Stat**
- **MoU Facility for Couriers**
- **Consolidations of DUCRs to MUCRs**
- **Designated Export Place (DEP)**
- **NCTS via EDCS & XML**
- **Generic Interface for 3rd party software**
- **Default information by Exporter and Consignee**
- **Repetitive CCNs by:**
 - **Exporter**
 - **Consignee**
 - **Relationship between both**
- **Comprehensive Tariff Validation**
- **Entry Advice Facility**
- **Security Message (FHL for US, Canada, India)**
- **Master Document:**
 - **IATA Approved MAWB**
 - **Combined Transport B/L**
 - **Instruction to Prepare B/L**
 - **CMR**
 - **Manifest**
- **House Documents:**
 - **HAWB + Bar-Coded Label**
 - **Advice of Despatch**
 - **Amended Delivery Instruction**
 - **Certificate of Shipment**
 - **Claim Letter**
 - **Collection/Delivery Note**
 - **Combined Transport B/L**
 - **Consignment Security Certificate**
 - **Delivery Instruction**
 - **Export Cargo Shipping Instruction**
 - **Fax Message**
 - **File Folder**
 - **Instruction to prepare B/L**
 - **Non-Negotiable Waybill**
 - **Standard shipping Note**
- **Invoicing & Job Costing**
- **Links to Sage & other Accounts**

Rental (per system):

- 1 User: £1000 p.a.**
- 5 Users: £2000 p.a.**
- Additional 5 Users: £1000 p.a.**

Includes 24/7 support

