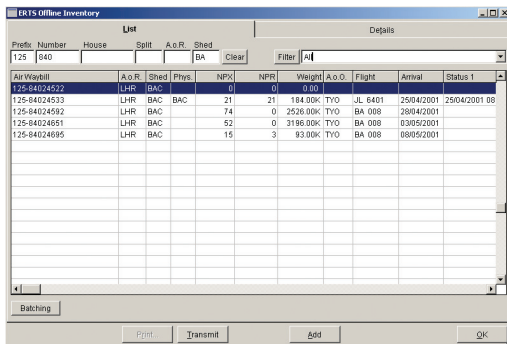


Visual ERTS

Visual ERTS is an additional facility within 'Visual Broker' that provides all the functions necessary to run an **Enhanced Remote Transit Shed** linked to CCS-UK.

Visual ERTS uses the same database, and runs alongside Visual Broker for DTI, utilising the same connection and communications software to access CCS-UK.

Visual ERTS is Multi-Company and Multi-Badge, and integrates with Visual Broker,



Visual ERTS has enhanced search and user-definable filtering of offline inventory for screen enquiry or reporting, and can be configured to auto-interrogate incomplete returned details.

Visual ERTS provides Consignment Release and Delivery, along with Release and Delivery Notes.

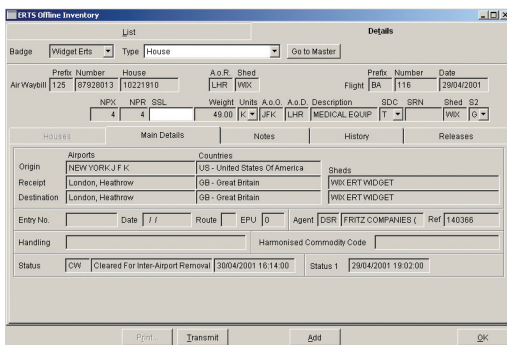
Visual ERTS incorporates a history of actions per consignment, along with an

audit trail of who created or modified entries, with access restricted by user and badge.

such that users can open an Entry and Inventory record at the same time.

Visual ERTS uses one main screen, which 'intelligently' shows or hides fields as they are required, populates them with defaults when necessary and validates or lists items that are referenced in the look-up tables.

Visual ERTS performs pre-transmission validation to reduce errors, comms traffic, time and costs. Entries can be saved for later transmission in the event of comms or CCS-UK problems.



In addition to planned enhancements, Impatex are more than willing to consider adding extra features, at the customer's request, so as to improve the product further.

Main Benefits

- **Multi-Company & Multi-Badge**
- **Full integration with Visual Broker for DTI**
- **Intelligent Data Entry**
- **ERTS Inventory Can Be Displayed Alongside Agent's Inventory**
- **Pre-Transmission Validation**
- **History of Actions per Consignment**
- **User Notes Facility**
- **Full Audit Trail**
- **Enhanced Search & User-Definable Filtering of offline Inventory**
- **Individual & Batch Release & Delivery**
- **Delivery & Collection Notes**
- **ERTS access secured by User & Badge**
- **Auto-Interrogate on Incomplete Returned Details**
- **Configurable Reports**

Rental (per location):
1 User: £500 p.a.
5 Users: £1000 p.a.
Additional 5 Users: £500 p.a.

Includes 24/7 support

Sharers: 50% of Rental

