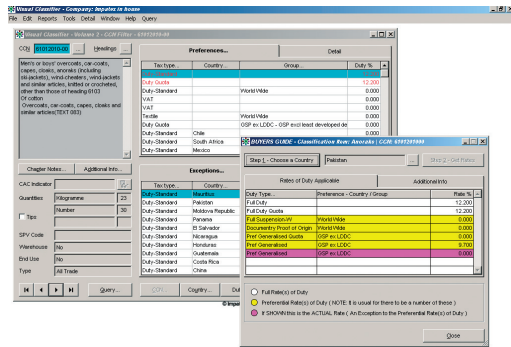


Visual Classifier

The heart of Customs Manager is the Customs Tariff and its related data tables, which make up Visual Classifier. Therefore, it is an essential module for running any other application within Customs Manager.

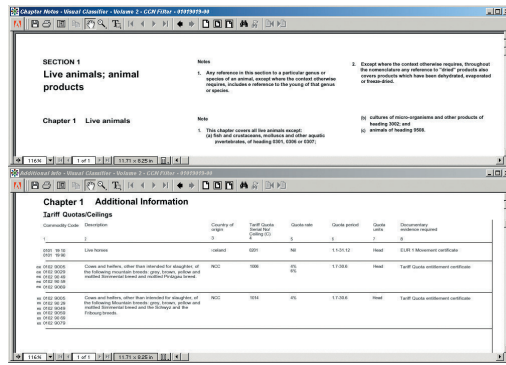
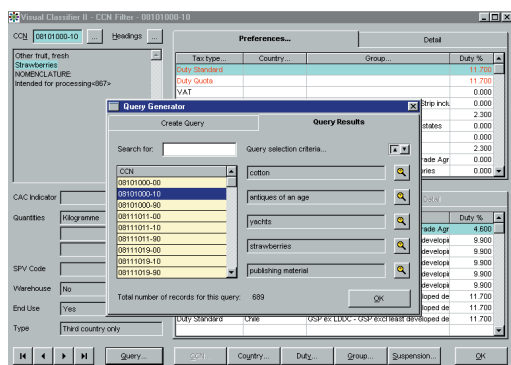
The data used for the Customs Tariff is provided monthly, without change from HM Revenue & Customs (HMRC). This, along with any changes to its related data tables, is sent out to customers within a few days of receiving the data, usually before the beginning of the month.



Therefore the data within Visual Classifier is the most up to date Customs Tariff data available after CHIEF, and some 6 weeks ahead of the Printed Tariff.

Because Visual Classifier contains the full Customs Tariff, it enables the user to find the correct Customs Commodity Number (CCN), using its powerful, multi-word, text search, and then apply it to a user-definable, trader-specific, product code and description.

In this respect, as well as being the full

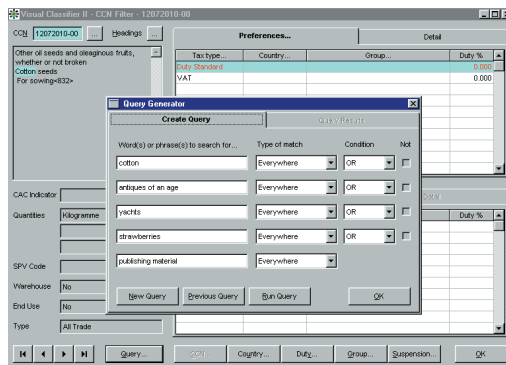


Customs Tariff in electronic form, it is also a product classification tool.

A 'Buyer's Guide' has been added to the Product File, which provides simple information on the Customs Tariff, depending upon which country they are imported from.

Filters are available for Countries, Groups, Duty, and Suspension Types. In addition, reports alert the user to any changes in CCNs and whether any re-classification is required, as well as lists of products and data tables.

Visual Classifier also includes the information in Volume III of the Printed Tariff as text and within its



related data tables, as well as the legal requirements, box number and text information in Volume I.

In Addition, the index contained in the 'pink pages' has been added, and to further aid classification, the Harmonised System Explanatory Notes (HSEN) has been included.

Main Benefits

- Full Customs Tariff
- Monthly Data Updates
- Multi-Word Text Search
- Browses at Chapter and CCN level
- Filters by Country, Group, Duty and Suspension Types
- Matches CCNs against Trader-specific Products
- Searches by Product Code or Product Description
- Buyer's Guide
- Product listings incl. those that require reclassification
- Data Import Facility for Product File
- Pink Pages Tariff Index
- Harmonised System Explanatory Notes (HSEN)
- Standalone or use with other Customs Manager Modules
- 32 Bit Windows Software

Rental (per system):

- 1 User: £250 p.a.
- 5 Users: £500 p.a.
- Additional 5 Users: £250 p.a.

System Requirements

LAN Workstation (min):

- Dual core Processor
- 2GB RAM and 64 MB video card
- 5 GB of free hard disk space
- 100/Gigabit Network Card
- Windows 2K, XP, Vista or Windows 7

LAN Server (min):

- Quad core / Dual Core Xeon
- 4 GB RAM
- 50 GB of free hard disk space (pref. SCSI or SATA) with RAID 1/5/10
- Data backup device
- Gigabit network card
- Windows 2003 SP3

Terminal Server (min):

- Quad core Xeon
- 4 GB RAM + 128MB RAM per user
- 80 GB free of SCSI/SATA RAID hard disk,
- Gigabit network card
- Windows 2003 SP3 or above with or without Citrix

Software:

- Visual Classifier for Tariff validation and data updates

