

Visual CFSP

Customs Freight Simplified Procedures (CFSP) is a new Customs regime that allows approved Traders or Forwarders to submit full electronic Customs entries after a simplified clearance at the port or airport.

Visual CFSP is a module within 'Customs Manager', designed to be used by both the Trader for in-house CFSP processing and the Forwarder wishing to provide CFSP to their customers.



Supplementary Declarations for Warehousing (SDW), and also the Final Supplementary Declaration (FSD) for monthly summaries.



For users wishing to process CFSP remotely, there are Data Import and Data Export facilities. There is also an Invoice Data Import facility to enable transfer of the Trader's in-house accounts data to save re-keying of invoice data into Visual CFSP.

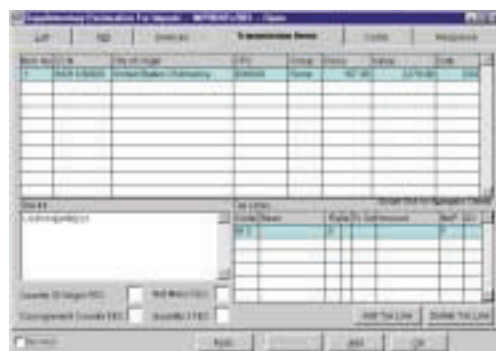
Visual CFSP is multi-trader, at no additional charge, and therefore is particularly attractive to the Forwarder, although for the Trader it enables them to process CFSP for multiple companies or divisions, if required.

Visual CFSP is a comprehensive, audit-based Duty Management System that integrates with other modules of 'Customs Manager' for Warehousing, IPR and OPR.

All CFSP transactions are Trader-Specific, which makes the auditing for Customs very comprehensive, allowing 'drill down' to invoice line item level.

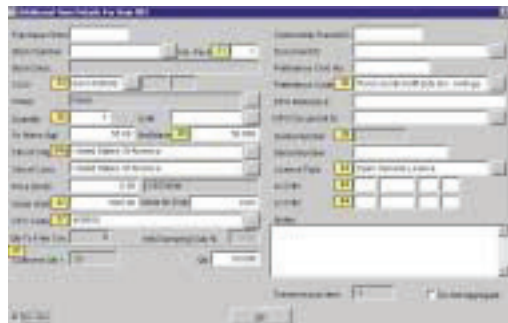
Visual CFSP incorporates the Simplified Frontier Declaration (SFD), which can apply to multiple Supplementary Declarations for Imports (SDI),

SFDs are transmitted, with immediate response, to CHIEF, via the DTI Communities: CCS-UK, CNS, Dover and MCP, using the same communications link as that for



Direct Trader Input (DTI). SDI's, SDW's and FSD's can also be transmitted via the DTI Communities or by E-Mail using the Internet

Visual CFSP uniquely validates all Tariff data against the full Customs Tariff contained in Visual Classifier, which is updated monthly.



Visual CFSP incorporates a generic interface to link to third party warehousing packages and in-house warehousing / stock control packages, as well as our own Visual Warehousing package.

Main Benefits

- Simplified Frontier Declaration (SFD)
- Supplementary Declaration for Imports (SDI)
- Supplementary Declaration for Warehousing (SDW)
- Final Supplementary Declarations (FSD)
- Transmission to CHIEF via DTI Communities or by E-Mail
- Full Customs Aggregation
- Multi-Trader (at no extra charge)
- Full Customs Tariff, updated monthly
- Data Import & Export Facility for SFD, SDI & SDW
- Invoice Data Import Facility for integration with Trader's accounts
- Comprehensive Validation
- 32 Bit Windows Software

Rental (per system):

- 1 User: £1000 p.a.
- 5 Users: £2000 p.a.
- Additional 5 Users: £1000 p.a.

One-off Licence charge (unless switching from alternative package or using Impatex's DTI software):

- 1 User: £5000
- 5 Users: £10000
- Additional 5 Users: £2500

System Requirements

- LAN Workstation (min):**
 Dual core Processor
 2GB RAM and 64 MB video card
 5 GB of free hard disk space
 100/Gigabit Network Card
 Windows 2K, XP, Vista or Windows 7

LAN Server (min):

- Quad core / Dual Core Xeon
 4 GB RAM
 50 GB of free hard disk space (pref. SCSI or SATA) with RAID 1/5/10
 Data backup device
 Gigabit network card
 Windows 2003 SP3

Terminal Server (min):

- Quad core Xeon
 4 GB RAM + 128MB RAM per user
 80 GB free of SCSI/SATA RAID hard disk,
 Gigabit network card
 Windows 2003 SP3 or above
 with or without Citrix

Software:

- Visual Classifier for Tariff validation and data updates

