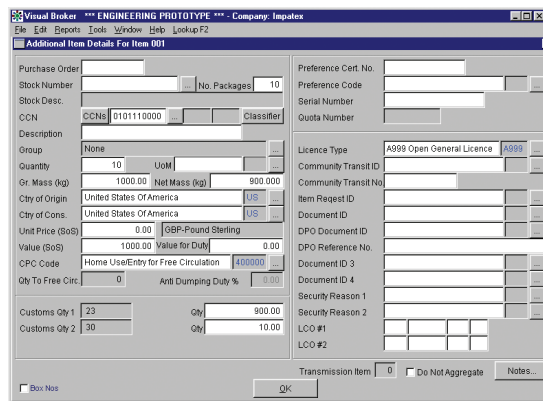
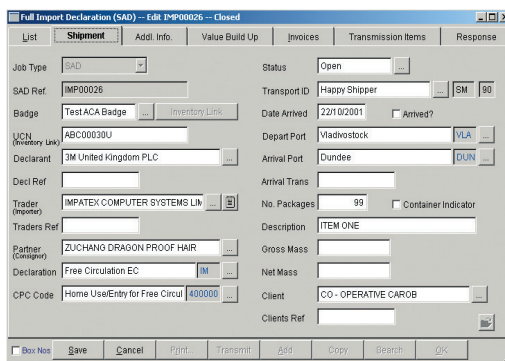


Visual Broker

Visual Broker is a software module of 'Customs Manager' that provides all the functions of an Import Customs Brokerage operation, in addition to Direct Trader Input (DTI).

Visual Broker also provides a customer-friendly, Entry Advice, along with a range of additional documents.

Visual Broker incorporates Automated Duty/VAT and Charges Invoicing with client-specific rates, for each job or consolidated, with an interface to Sage and other Accounts. In addition, comprehensive job costing

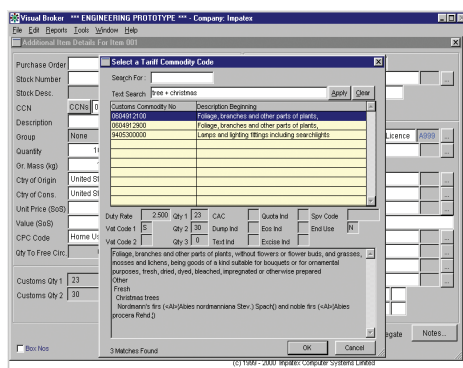


and reporting is provided for profit control.

Visual Broker uniquely links directly to all DTI Communities, i.e. CCS-UK, CNS, Dover, MCP and Pentant, making it the natural choice for 'Corporate' forwarders with multiple branch offices, wishing to standardise on the same DTI software for all communities.

Visual Broker also incorporates all the CCS-UK Messaging required for Imports, thereby replacing ASM2000NT and GeMS.

Visual Broker utilises the same

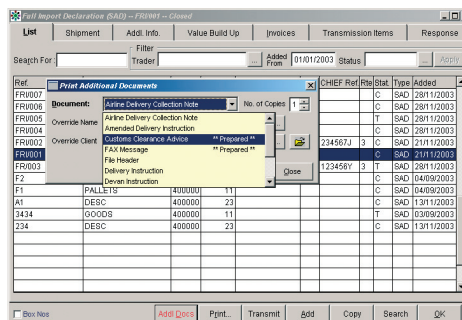


database as the rest of 'Customs Manager', such that data added or amended in one module is reflected in another.

Visual Broker uniquely validates all Tariff data against the full Customs Tariff contained in Visual Classifier, which is updated monthly.

Visual Broker stores default information by Importer and Consignor, and uniquely stores repetitive Customs Commodity Numbers (CCN) against Importers, Consignors and the Relationship between both.

Visual Broker can have item information stored either at heading or



invoice line item level, and if the latter, then it can automatically aggregate the invoice line items to produce the headings and provide a detailed worksheet.

Visual Broker can seamlessly add Duty Unpaid stock into Visual Warehousing, from where it would be removed and an SDW produced by Visual CFSP.

Visual Broker caters for 'Arrivals' and 'Transhipments' for the new Computerised Transit System (NCTS) with Visual NES catering for Departures

Main Benefits

- SAD
- IWRD
- C21
- SFD
- **Only Software with direct Interfaces to all Communities:**
 - CCS-UK
 - CNS
 - Dover (Incl, ACA)
 - MCP
 - Pentant
- CCS-UK Messaging, for Imports, without ASM2000NT or GEMS
- NCTS Arrivals & Transhipments
- Batch Transmissions
- Transmissions Log
- Default information for Importers and Consignors
- Repetitive CCNs by:
 - Importer
 - Consignor
 - Relationship between both
- Comprehensive Tariff Validation
- Comprehensive Job Search
- Entry Advice Facility
- Integrated Aggregation with Worksheet
- Additional Documents:
 - Customs Clearance Advice
 - Delivery Instruction
 - Amended Delivery Instruction
 - GP/LCL Delivery Instruction
 - Airline Collection/Delivery Note
 - Release Instruction
 - Devan Instruction
 - Notice of Examination
 - Notice of X-Ray Examination
 - Notice of Arrival
 - Cargo Reminder
 - 45 Day Reminder
 - Gate Pass
 - Fax Message
 - File Header
- Manifest of Consignments
- Automated Duty/VAT and Charges Invoicing
- Duty Deferment Schedules
- Comprehensive Job Costing
- Links to Sage and other Accounts
- 32-bit Windows Software

Rental (per system):

- 1 User: £1000 p.a.
- 5 Users: £2000 p.a.
- Additional 5 Users: £1000 p.a.

Includes 24/7 Support

Sharers: 50% of Rental

